

Strategic Proposal for Board & Stakeholder Review

EKSPEDISI AI NUSANTARA 2026

"Grounding the Cloud: Membumikan Kecerdasan Awan"

National Survivability and Sovereignty in the age of Artificial General Intelligence

- EKSPEDISI AI NUSANTARA 2026..... 1**
- DOCUMENT INFORMATION..... 3
- KEY TERMINOLOGY GUIDE.....4
- 1. EXECUTIVE SUMMARY..... 6
 - The Three-Phase Campaign Arc..... 7
- 2. STRATEGIC CONTEXT & REGIONAL LANDSCAPE.....8
 - 2.1 The 2026 Deployment Horizon: Why Now?.....8
 - 2.2 Indonesia's Positioning Within ASEAN: The "Application Engine" Strategy..... 8
- 3. Alignment with STRANAS KA 2045 & the AGI Horizon..... 11
 - 3.1 Operationalizing the National Strategy.....11
 - 3.2 The "Long Game": Sovereignty, Resilience, and the AGI Horizon..... 12
- 4. THE SOLUTION ARCHITECTURE: "GROUNDING THE CLOUD"..... 13
 - Phase 1: THE CLOUD (Strategic Alignment & Establishment) | June 2026.....13
 - Phase 2: THE GROUNDING (Operational Deployment via Provincial Relay) | July – December 2026..... 14
 - Phase 3: THE HORIZON (Aggregation & Strategic Legacy) | January 2027..... 17
- 5. TECHNICAL INFRASTRUCTURE: THE T6 PLATFORM.....20
 - 5.1 Core Technical Capabilities.....20
 - 5.2 Offline-First Architecture & Resilience..... 20
 - 5.3 Blockchain Credential Verification.....21
- 6. STRATEGIC OUTCOMES & ECONOMIC PROJECTIONS.....22
 - The "Grande" Outcome: Peta Potensi AI Nusantara..... 22
- 7. IMPLEMENTATION ROADMAP..... 23
 - 7.1 Timeline & Key Milestones.....23
- 8. BUDGET ALLOCATION..... 25
- 9. PARTNERSHIP & GOVERNANCE STRUCTURE..... 26
- 10. RISK ASSESSMENT & MITIGATION.....27
- 11. SUCCESS METRICS.....29
 - Participation & Engagement..... 29
 - Learning Outcomes.....29
 - Economic Impact..... 29
- 12. STAKEHOLDER VALUE PROPOSITION.....31
- 13. CONCLUSION.....32
- APPENDICES.....33
 - Appendix A: Nusantara AI Protocol Framework (Summary).....33
 - Appendix B: T6 Platform Technical Specifications (Summary).....33
 - Appendix C: Provincial Bootcamp Schedule (4-Week Model)..... 34

DOCUMENT INFORMATION

Property	Details
Prepared by	Putra Nasution, Director of Marketing & Admission, Tsinghua SEA
Prepared for	TSEA/UID Board of Management + Faculties, and Triple Helix Stakeholders
Date	December 16, 2025
Affiliation	Tsinghua SEA (TSEA) & United in Diversity (UID)
Minimum Budget Requirement	IDR 6,600,000,000,-- <i>(excluding TSEA-X platform development)</i>
Funding Source	Fundraising from stakeholders, co-hosts and sponsorships
Campaign Duration	January – December 2026 (Deployment Phase) + January 2027 (Summit)
Geographic Scope	38 Indonesian Provinces
Target Participants	100,000+ AI-literate citizens across industry verticals
Strategic Thesis	"Grounding the Cloud" — moving beyond accessing AI technology to applying it at scale across Indonesia's real economy in the wake of Agentic and Artificial General Intelligence

KEY TERMINOLOGY GUIDE

AGI (Artificial General Intelligence)

AI systems capable of understanding, learning, and applying knowledge across many domains with human-level performance. Unlike narrow Generative AI (which excels at specific tasks), AGI can reason and solve novel problems without domain-specific retraining, and very likely to replace the majority of the human work force. Many expert surveys place non-trivial probability (20–50%) on AGI emergence by 2030–2035.^{[1][2]}

Agentic AI

AI systems that do not just respond to prompts, but can plan, decide, and act autonomously toward a goal. Examples: autonomous code agents that write, test, and deploy software; workflow agents that handle end-to-end back-office processes. Agentic AI is already reshaping global labor markets, with 400–800 million jobs projected for automation or transformation by 2030.^[3]

Blockchain (for Credentials / Certificates)

A distributed ledger that stores records in a way that is tamper-resistant and verifiable by anyone. In this proposal, every completed IRIS project issues a blockchain-verified credential: a cryptographically signed, time-stamped proof of capability that employers and government can independently verify.

Socratic AI Tutor

An AI tutor that teaches by asking questions instead of giving direct answers. When a learner's model performs poorly, the tutor asks: “*What might happen if you removed these data points?*” rather than saying “*Remove these data points.*” This questioning approach deepens understanding and supports better transfer of learning to new problems.^[4]

Synchronized Triple Helix

An upgraded version of the classic *triple helix* (university–government–industry). Instead of just “collaborating” through occasional meetings, the three sectors make decisions together in real time based on shared data. Curriculum, hiring, and policy are adjusted within weeks (not years) using live feedback from the field.

Peta Potensi AI Nusantara

A National AI Potential Map aggregating all IRIS projects and skills data from 38 provinces. It is a realtime and holistic Big Data dashboard, visualizing where

AI-capable talent is located, which sectors are strongest in each region, where skills gaps exist, and where investment opportunities are emerging.

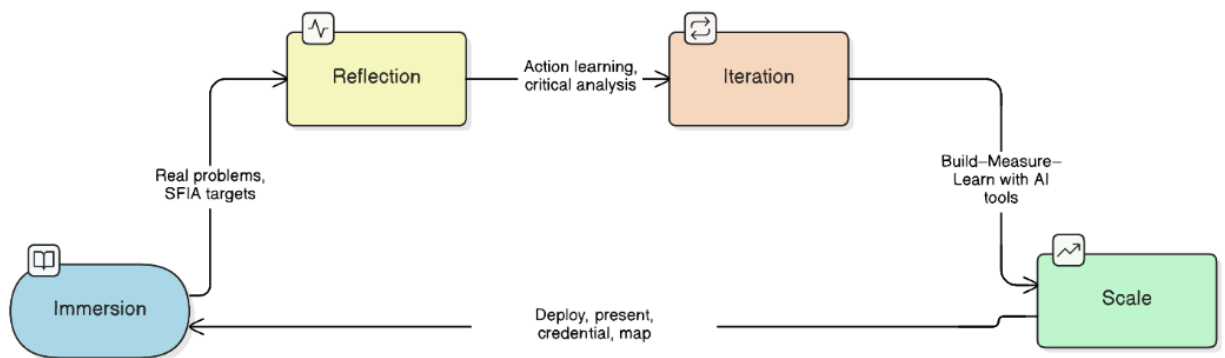
1. EXECUTIVE SUMMARY

The year 2026 marks the "Deployment Horizon" for the global economy. As Artificial Intelligence matures from experimental cloud-based models to practical, agentic systems capable of autonomous reasoning and problem-solving, the challenge for nations has fundamentally shifted. The question is no longer "Can we access AI technology?" but rather "Can we apply it?"

For Indonesia, this moment presents a defining strategic imperative: we must take the high-level potential of the "AI Cloud" and ground it firmly in the reality of our "Nusantara Soil" —transforming abstract digital capabilities into tangible economic tools that serve our 286.7 million citizens and amplify our 68.2% working-age population advantage.

Ekspedisi AI Nusantara 2026 operationalizes this mission through the **NUSA Framework (National Upskilling Sprint for AI)**, a revolutionary pedagogical and cultural synthesis combining four components:

1. **IRIS Cycle (Immerse–Realize–Iterate–Scale)** – Andragogical sequence grounded in reverse-trivium, Knowles' adult learning principles, and transformative learning theory, adapted for rapid AI competency development.



2. **GASING Pedagogy (Gembira–Aktif–Santai–Ilmiah–Nekad–Sistematis)** – Prof. Yohanes Surya's legendary cultural pedagogy, infusing joy, activity, relaxation, scientific rigor, daring innovation, and systematic execution throughout the entire IRIS experience.
3. **Gamification Mechanics (Streaks, Provincial Leagues, Badges, Daily Challenges, PKC Showcase)** – Psychological mechanisms proven to sustain engagement and create intrinsic motivation: loss aversion (streaks), progress visibility (leaderboards), autonomy (choice), mastery (SFIA badges), belonging (provincial competition), and narrative arc (identity journey).

4. **PKC (Personal Knowledge Container)** – A learner-owned digital portfolio capturing artifacts, reflections, assessments, and achievements—serving simultaneously as career asset, learning tool, research resource, and national intelligence input.

Together, these create a **rapid (4 weeks), rigorous (SFIA-mapped), joyful (GASING-infused), addictive (gamified) learning experience** that transforms participants into AI-literate professionals while honoring Indonesian cultural values and psychological sustainability.

The Three-Phase Campaign Arc

1. **THE CLOUD (June 2026)** – Convening Triple-Helix stakeholders to ratify the **"Nusantara AI Protocol"**—harmonized standards for curriculum, ethics, and deployment aligned with Stranas KA 2045 and Pancasila values. Launch of "Nusantara Digital Torch."
2. **THE GROUNDING (July–December 2026)** – Executing a six-month provincial relay across all 38 provinces via NUSA Framework, delivering IRIS cycles powered by gamification mechanics and T6 digital backbone. Produces 100,000+ SFIA-mapped practitioners with verifiable blockchain credentials.
3. **THE HORIZON (January 2027)** – National AI Summit launching **"Peta Potensi AI Nusantara"** (National AI Potential Map)—a sovereign, data-driven intelligence asset visualizing talent clusters, sectoral innovation, and institutional capacity for policy and investment guidance.

The campaign operates under a very lean, sustainable budget model with a baseline of IDR 6.6 billion (USD \$400K), delivering:

- 100,000+ certified practitioners at IRIS Operational Capability Level 3
- 38 provincial relay events with standardized bootcamp delivery
- Blockchain-verified credentials (certificates) representing proven capability
- National media visibility through MURI record attempts
- Crowdsourced AI potential intelligence enabling sovereign strategic planning and investment

2. STRATEGIC CONTEXT & REGIONAL LANDSCAPE

2.1 The 2026 Deployment Horizon: Why Now?

Southeast Asia's AI ecosystem is entering a hyper-acceleration phase, projected to generate USD 835 billion in economic value by 2030, representing compound annual growth exceeding 25%. However, a critical bottleneck threatens to undermine this opportunity: ASEAN-wide, approximately 30% of AI-critical technical roles remain unfilled due to insufficient domestic talent development pipelines.

The challenge facing Indonesia is not technology access. Cloud platforms, AI APIs, and open-source models are globally available. The bottleneck is deployment capability—the ability to take cloud-based AI and apply it effectively to local problems, in local contexts, with local talent.

Without immediate intervention, Indonesia risks a "K-shaped" AI adoption trajectory where elite institutions and multinational corporations capture AI's productivity gains while rural regions, SMEs, agricultural enterprises, and underrepresented populations remain disconnected from these benefits. This creates a widening capabilities gap that becomes an economic inequality chasm.

Ekspedisi AI Nusantara 2026 is the strategic intervention Realizeed to invert this trajectory—ensuring that AI's benefits are distributed equitably across Indonesia's geography and socioeconomic strata.

2.2 Indonesia's Positioning Within ASEAN: The "Application Engine" Strategy

Indonesia operates within a competitive ASEAN AI ecosystem where neighboring economies advance at different speeds with different strategic objectives.

Singapore's Strategy: The "High-Value Research & Development Hub"

Singapore has positioned itself as ASEAN's AI research and governance center. With government AI investment projected to reach USD 4.64 billion by 2030, Singapore focuses on attracting elite international talent for high-complexity research and hosting multinational technology headquarters. This is rational for a city-state of 5.9 million—optimizing for value per capita and technological frontier advancement. However, this strategy creates a natural ceiling: Singapore's small population cannot generate the scale of mid-tier technical talent required for regional deployment.

Vietnam's Strategy: The "Coding Factory"

Vietnam has developed a talent surplus model, creating abundant junior and mid-level developers for outsourced software contracts from global corporations. This positions Vietnam favorably in labor arbitrage markets but does not create sovereign capability in AI solution development or indigenous innovation leadership.

Indonesia's Optimal Strategy: The "Application Engine"

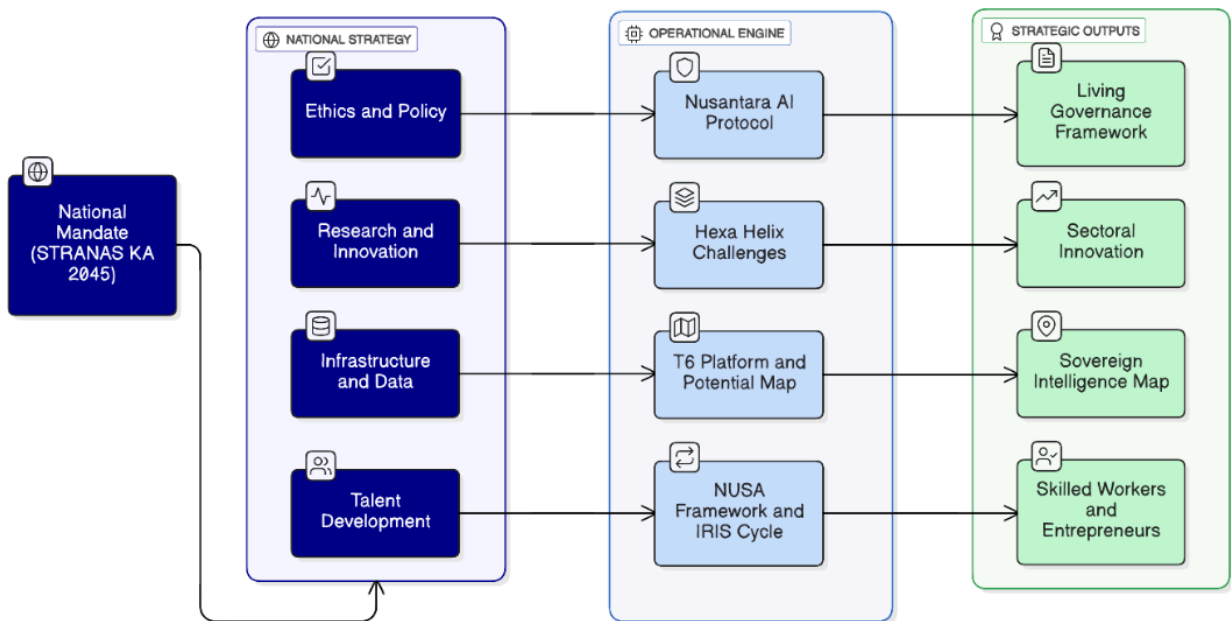
Indonesia possesses three distinct competitive advantages that neither Singapore nor Vietnam can replicate at comparable scale:

1. **Demographic Scale & Diversity:** With 286.7 million citizens and 42.4% of the population under age 25, Indonesia has the raw human capital to develop 3–5 million AI-literate practitioners by 2030. This is 2–3 orders of magnitude larger than Singapore's entire technical workforce. Equally critical, this population is geographically dispersed across 17,000+ islands and 38 provinces, representing extraordinary diversity of economic contexts and problem domains.
2. **Problem Density & Economic Complexity:** Indonesia's geographic dispersion, agricultural sector (45 million hectares cultivated land), maritime economy (17,000+ islands with major fisheries), extraordinary SME density (66 million micro and small enterprises), and emerging manufacturing hubs create an extraordinarily rich problem domain where AI solutions drive immediate operational impact.
3. **Market Access & Regional Influence:** As ASEAN's largest economy by GDP (approximately USD 1.3 trillion, 2024), Indonesia represents a natural test market for AI solutions at scale. Success in deploying AI across agriculture, maritime, SME, and governance sectors creates a replicable model for the broader ASEAN region.

Strategic Positioning: Indonesia cannot compete with Singapore on high-cost R&D or with Vietnam on labor arbitrage alone. Indonesia's strategic advantage lies in Scale and Application—the ability to deploy AI solutions across diverse real-economy sectors at massive scale, generating immediate economic value while establishing thought leadership in applied AI.

Ekspedisi AI Nusantara 2026 activates this advantage by building 100,000 AI-literate practitioners across agriculture, maritime, SME, fintech, and governance sectors. This shifts Indonesia from being a market for foreign AI products to becoming a market of indigenous AI solution developers.

3. Alignment with STRANAS KA 2045 & the AGI Horizon



3.1 Operationalizing the National Strategy

Ekspedisi AI Nusantara 2026 is explicitly designed to **operationalize** Indonesia's National Strategy for Artificial Intelligence (Stranas KA 2045). We translate the strategy's four national missions into concrete operational engines:

Stranas KA 2045 Mission	Ekspedisi AI Nusantara Implementation
Ethics & Policy	Nusantara AI Protocol — a harmonized standard ensuring trustworthy, interpretable AI aligned with Pancasila values and national resilience principles.
Talent Development	NUSA Framework + IRIS Cycle + GASING + Gamification — sprint model targeting SFIA Level 3–4 competencies, preparing talent for both industry roles and entrepreneurship while ensuring psychological sustainability and joy.
Infrastructure & Data	T6 Platform + Peta Potensi AI Nusantara — a sovereign digital backbone and

Stranas KA 2045 Mission	Ekspedisi AI Nusantara Implementation
	intelligence asset enabling data sovereignty and offline-first resilience as envisioned by Stranas.
Research & Innovation	Hexa-Helix Challenges — demand-driven innovation sprints that catalyze the KORI-KA (Kolaborasi Riset dan Inovasi Kecerdasan Artifisial) ecosystem at provincial level.

3.2 The "Long Game": Sovereignty, Resilience, and the AGI Horizon

Stranas KA 2045 explicitly states that *"from the beginning, it is necessary to consider the direction of AGI development for national interests."* Ekspedisi AI Nusantara 2026 addresses this through three pillars of sovereignty:

1. **Talent Sovereignty (Human-in-Command Governance)** – As AI systems become agentic, human oversight is critical. The NUSA curriculum embeds Human-in-the-Loop (HITL) and Human-in-Command (HIC) principles, training Fellows not only to *build* AI, but to *govern* it with cultural and ethical wisdom grounded in Pancasila.
2. **Data Sovereignty (Sovereign Intelligence)** – Peta Potensi AI Nusantara is designed as a domestically owned, near-real-time map of national AI capability. This reduces dependence on foreign consulting firms and ensures the state possesses the intelligence needed to navigate the AGI transition independently.
3. **Infrastructure Resilience ("Survival AI")** – The T6 platform employs an **Offline-First** design philosophy. Progressive web applications, local caching, and asynchronous synchronization ensure that AI capability reaches every island regardless of connectivity, protecting equity of access and resilience against external shocks.

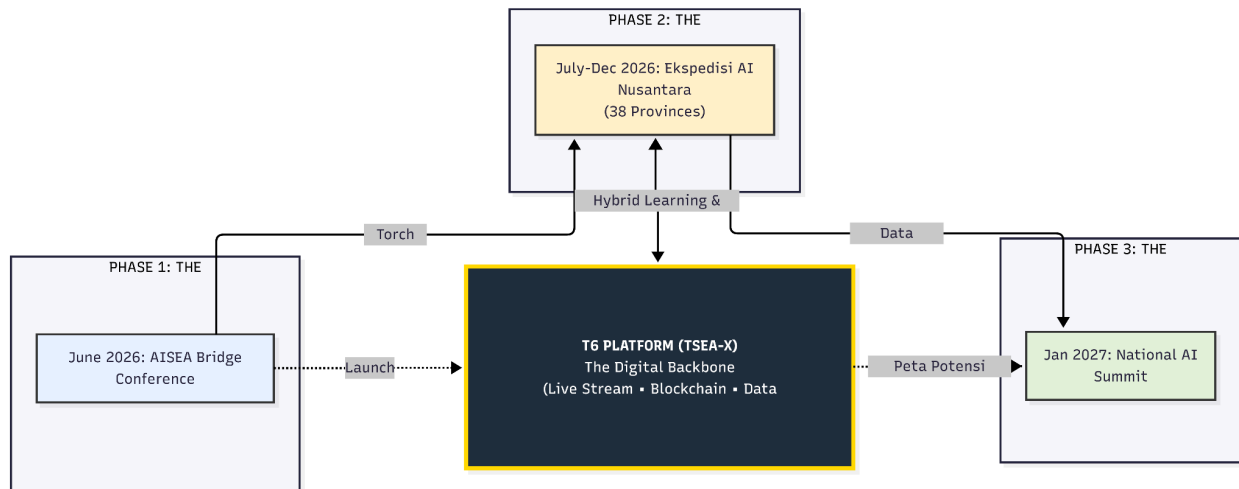
4. THE SOLUTION ARCHITECTURE: "GROUNDING THE CLOUD"

Our methodology orchestrates seamless coordination across three distinct temporal phases, each addressing a specific strategic objective.

Phase 1: THE CLOUD (Strategic Alignment & Establishment) | June 2026

Venue: AISEA Bridge Conference (AISEABC), UID Bali Campus

The campaign journey begins at the "Cloud Layer." The AISEA Bridge Conference serves as the command center where the Triple-Helix sectors (Academia, Government and Industry) converges to establish foundational standards and commitments required for national-scale deployment: the Nusantara AI Protocol, and launching the T6 Platform.



Objective 1.1: Ratify the "Nusantara AI Protocol"

The Nusantara AI Protocol is a harmonized standard document establishing:

- **Curriculum Standardization:** Core competencies required for AI operational capability across government, corporate, startup, and community contexts
- **Ethical Frameworks:** Localized AI governance principles reflecting Indonesian constitutional values and Pancasila principles
- **Certification Standards:** Blockchain-based credential verification mechanisms
- **Data Governance:** Privacy, security, and intellectual property protocols

- **Safety Standards:** Guidelines for responsible AI use, bias mitigation, and socially beneficial application

This ensures curricular coherence while maintaining local contextual adaptation.

Objective 1.2: Launch the "Nusantara Digital Torch"

A symbolic and operational mechanism for distributing the Protocol's standards to provincial hosts. The Digital Torch serves dual purposes:

- **Narrative Device:** A powerful symbolic moment captured by national media, establishing political legitimacy and public awareness
- **Technical Distribution Mechanism:** T6 platform integration, curriculum modules, pedagogical guidance, and certification standards flow to provincial bootcamp sites

Objective 1.3: Secure Industry Commitments

By convening major technology companies (Google, Microsoft, Amazon, Telkomsel) and telecommunications providers, the conference secures multi-year commitments to access the "Peta Potensi AI Nusantara," establish hiring pipelines for bootcamp graduates, provide real-world datasets, and co-invest in provincial delivery.

Deliverables from Phase 1:

- Nusantara AI Protocol (published document, public domain)
- Signed industry partnership commitments (minimum 5–7 anchor partners)
- Curriculum modules integrated into T6 platform
- Provincial host site confirmations (38 rectors/institutions)
- National media coverage establishing campaign legitimacy
- Presidential or Cabinet-level official endorsement

Phase 2: THE GROUNDING (Operational Deployment via Provincial Relay) | July – December 2026

Vehicle: Ekspedisi AI Nusantara—Provincial relay across all 38 provinces

Deployment Model: Provincial Bootcamps with Standardized Parameters

Parameter	Specification
Duration per Province	4 weeks per location (staggered for media coverage and political engagement)
Schedule	Day 1: In-person intensive bootcamp (8–10 hours, IRIS Immerse phase); Weeks 2–4: Online T6 platform learning (Realize, Iterate, Scale phases—one per week)
Participant Capacity	2,500–3,000 per province (total: 100,000+ across 38 provinces)
Delivery Format	Hybrid: Day 1 in-person intensive (40%) + T6 platform asynchronous learning weeks 2–4 (60%)
Pedagogical Method	IRIS framework (Immerse-Realize-Iterate-Operate) with Socratic AI tutoring
Prerequisite Skills	Basic digital literacy only
Target Demographics	Government civil servants (30%), SME operators/employees (25%), agricultural extension workers (15%), fintech/startup employees (15%), students (10%), underrepresented populations (5%)
Cost per certificate issuance (optional)	Rp50,000 (USD 3.00)

Timeline Structure (4-Week Cycles)

Timeline	Provincial Coverage	Key Milestones
July 1–31, 2026	Legs 1 & 2: Sumatra + Kalimantan (12 provinces)	30,000 participants; initial IRIS cohort completes by Aug 1
August 1–31, 2026	Legs 3 & 4: Java + Sulawesi (15 provinces)	37,500 participants; Legs 1–2 cohorts in advanced validation
September 1–30, 2026	Leg 5: Nusa Tenggara & Papua (11 provinces)	32,500 participants; Legs 1–3 cohorts completing validation
October–December 2026	Consolidation & Catch-Up	All 38 provinces complete by December 31; data aggregation begins
January 10–15, 2027	NATIONAL AI SUMMIT (Jakarta)	Peta Potensi AI Nusantara launch, MURI recognition, fellowship announcement

The IRIS Framework: Building Capability Through Real-World Problem Solving

Day 1: Intensive In-Person Bootcamp (IMMERSE Phase)

Participants, working in cross-functional teams of 4–5, meet in person for a full-day intensive session where they:

1. Identify and define a real local problem suitable for AI intervention
2. Receive problem briefs from industry partners or government agencies
3. Frame the problem as an AI-solvable challenge
4. Develop team roles and project planning documents
5. Access T6 platform and complete initial account setup

Weeks 2–4: Online T6 Platform Learning (REALIZE, ITERATE, SCALE Phases)

Week 2 (REALIZE Phase): Using T6's native planning tools, participants draft a solution architecture defining data inputs, model outputs, success metrics, and integration points.

Week 3 (ITERATE Phase): Participants build a functioning prototype using T6's cloud-hosted development environments—Python, LLM access, no-code/low-code tools, and data visualization capabilities. All computing is cloud-hosted, requiring only basic internet access.

Week 4 (SCALE Phase): Participants test their prototype against held-out test data, validating model performance, system stability, usability, and data privacy compliance.

Only upon successful validation does the participant receive their Blockchain-Verified CIRDIO Credential, which certifies demonstrated capability to identify AI-relevant problems, Realize solution architectures, implement working prototypes, and validate effectiveness.

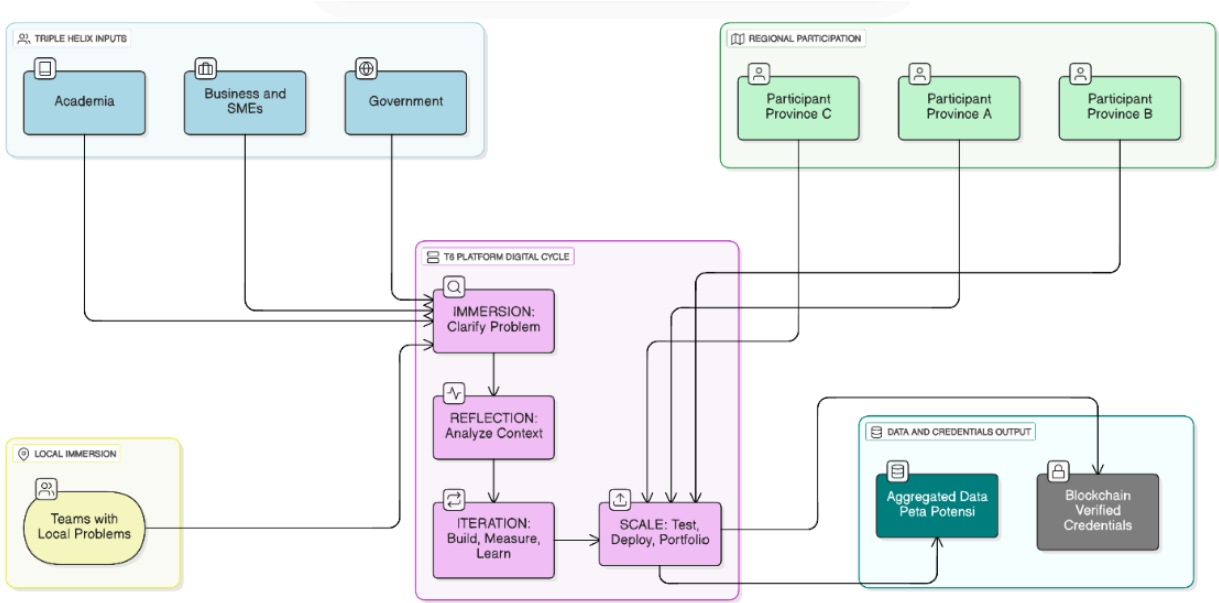


DIAGRAM 2: T6 Platform + IRIS Cycle

Phase 3: THE HORIZON (Aggregation & Strategic Legacy) | January 2027

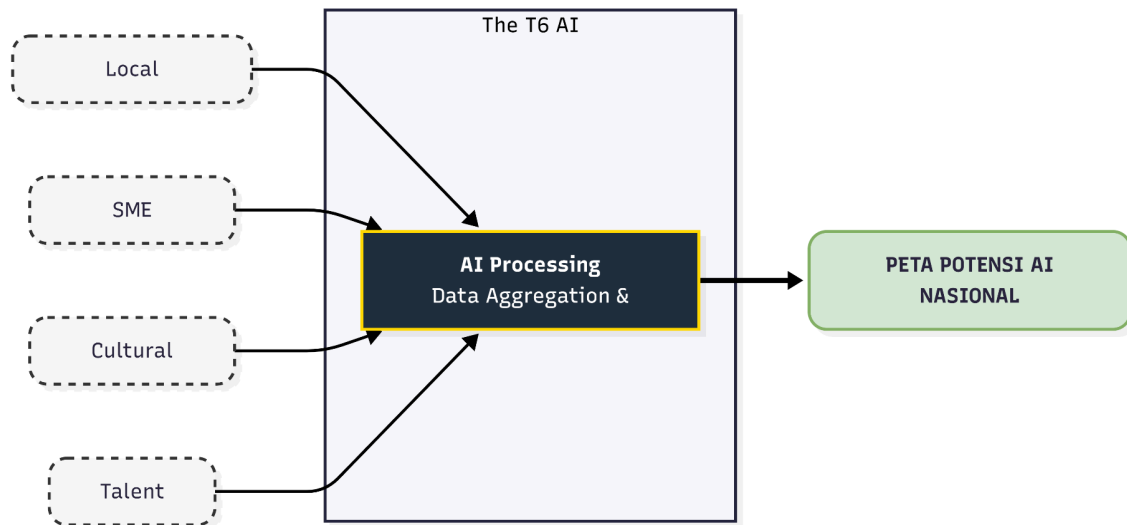
Venue: National AI Summit, Jakarta

The expedition culminates with data synthesis and institutional legacy establishment.

Deliverable 3.1: The "Peta Potensi AI Nusantara"

By aggregating IRIS projects, skill assessments, project metadata, and sectoral data from all 38 provinces, we construct a dynamic visualization dashboard revealing:

- **Geographic Talent Distribution:** Provinces and municipalities with cultivated AI-capable populations; talent density hotspots
- **Sectoral Capability Clusters:** Regional specialization patterns (e.g., Sumatra in Agro-tech, Sulawesi in Maritime Logistics, Java in Fintech)
- **Skills-to-Demand Gap Analysis:** Unmet demand and talent surplus patterns
- **Industry-Specific Innovation Patterns:** Which sectors are adopting AI fastest
- **Problem Domain Mapping:** Geographic distribution of solved problems by category



Strategic Value for Government: This replaces institutional guesswork with data-driven evidence for policy targeting, infrastructure investment, industrial policy, and workforce development strategy.

Strategic Value for Private Investors: This identifies where skilled talent clusters exist, enabling confident greenfield investment decisions, recruitment office placement, research center establishment, and supply chain development.

Deliverable 3.2: MURI Records & National Media Amplification

The campaign targets two MURI (Museum Rekor Indonesia) records:

1. **"Longest Relay AI Conference":** A geographically distributed, 38-province conference series with unified curriculum and qualification standards
2. **"Most Blockchain-Verified Professional Credentials (certificates) Issued":** 100,000+ blockchain-based skill certifications

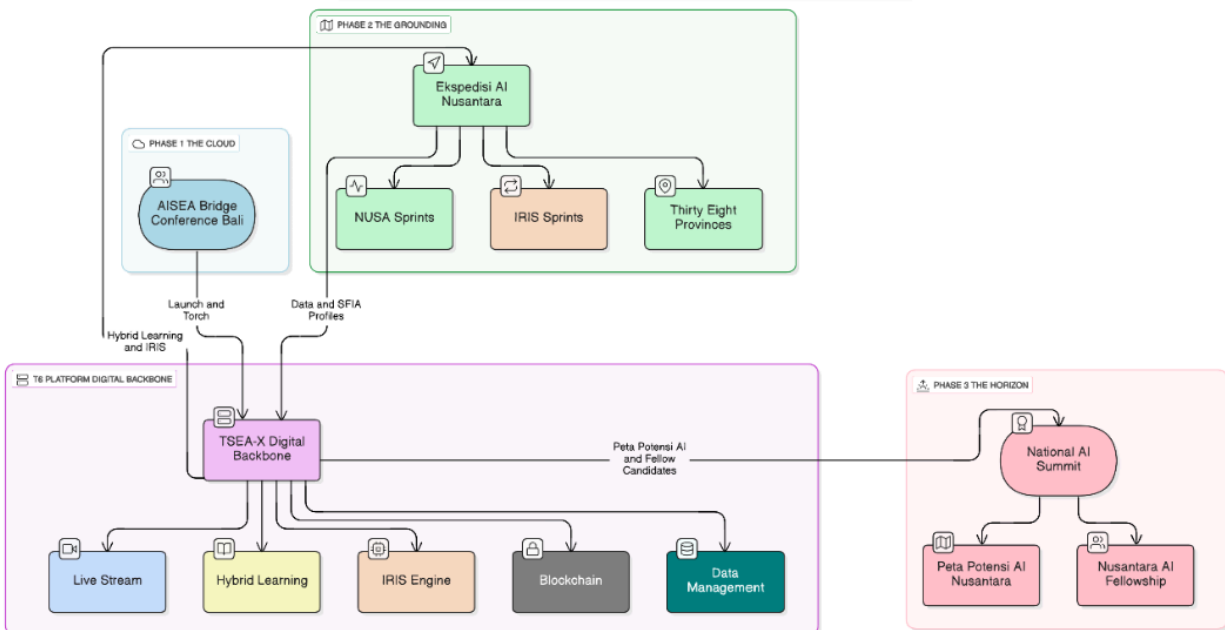
These records generate national news coverage in every single province, transforming visibility into unavoidable political and social awareness, maximizing enrollment and institutional prestige.

Deliverable 3.3: The "Nusantara AI Fellowship"—Institutional Sustainability

By January 2027, the campaign establishes the "Nusantara AI Fellowship" as an ongoing, self-sustaining institution enabling:

- Rolling annual bootcamp cohorts in high-demand provinces
- Advanced specialization tracks
- International skill certification partnerships (Google Cloud, AWS, Azure)
- Employer placement and career progression tracking
- Industry consortium formation

This ensures 2026 is not an endpoint but an inflection point—when Indonesia established institutional capacity for continuous AI talent development.



5. TECHNICAL INFRASTRUCTURE: THE T6 PLATFORM

To execute at this scale requires technological infrastructure beyond traditional learning management systems. The T6 (TSEA-X) platform is engineered specifically for end-to-end AI skill sovereignty—ensuring Indonesia develops authentic capability rather than dependence on foreign expertise.

5.1 Core Technical Capabilities

Native AI Development Environments

T6 integrates cloud-hosted development environments directly accessible within the platform:

- **Python/R Computing:** Jupyter notebooks with pre-installed libraries (NumPy, Pandas, scikit-learn, TensorFlow, PyTorch)
- **LLM Interfaces:** Integrated access to major AI models (GPT-4, Claude, Gemini, open-source models) and/or Indonesian-made LLMs (Sahabat-AI / SEA-LION)
- **Low-Code/No-Code Tools:** AutoML, visual workflow builders, data pipeline tools for non-programmers
- **Data Analytics Toolkit:** SQL builders, statistical testing frameworks, visualization libraries
- **Model Deployment:** FastAPI/Flask integration for production-ready model serving

All computing is cloud-hosted (private). Participants require only basic Chromebooks, tablets, or even smartphones with internet access—eliminating the technology barrier to learning. A participant in Papua accesses identical computational capacity as one in Jakarta.

Socratic AI Tutor Architecture

Rather than delivering prescriptive instruction, T6 embeds a Socratic dialogue engine that guides problem-solving through calibrated questioning, cultivating transfer learning. Research in cognitive science demonstrates that Socratic dialogue produces 40–60% better learning retention and significantly better transfer to novel contexts.

5.2 Offline-First Architecture & Resilience

Indonesia's geographic and infrastructure reality demands resilient connectivity:

- **Progressive Web App (PWA) Technology:** Functions with minimal internet; updates when connection available
- **Synchronization Queuing:** Work products queue locally and sync when connectivity returns, paired with the Personal Knowledge Container concept.

- **Cached Curriculum Content:** Video modules, slides, and code templates cache locally
- **Asynchronous Collaboration:** Team work continues despite intermittent connectivity

This ensures learning survives and continues regardless of infrastructure limitations—the "Survival AI" Realize philosophy.

5.3 Blockchain Credential Verification

Each IRIS project completion generates a blockchain-verified credential recorded on a distributed ledger containing:

- **Learner Identifier:** Anonymous hashing for privacy protection
 - **Project Metadata:** Problem statement, solution domain, metrics achieved, completion date
 - **Verifier Signature:** Cryptographic signature from bootcamp instructor
 - **Timestamp:** Immutable record of completion date
 - **Transferability:** Employers and government agencies independently verify authenticity
-

6. STRATEGIC OUTCOMES & ECONOMIC PROJECTIONS

The "Grande" Outcome: Peta Potensi AI Nusantara

The aggregated IRIS projects generate the "Peta Potensi AI Nusantara" as a strategic and sovereign intelligence asset, replacing assumption-based institutional planning with evidence-based policy and investment.

For Government Strategic Planners:

- Which regions have the highest AI-capable population concentration?
- Which sectors are innovating fastest with AI?
- Where is unmet AI talent demand concentrated?
- Which regions have AI talent surplus for diaspora engagement?

For Private Investors:

- Where do skilled talent clusters exist for greenfield investment?
- Where should recruitment offices and innovation hubs be established?
- Which regions specialize in different problem domains?
- Where should supply chain development be targeted?

This intelligence asset typically costs USD 500K–2M per study from international consulting firms. Ekspedisi AI Nusantara generates equivalent intelligence as a natural byproduct of bootcamp operations.

7. IMPLEMENTATION ROADMAP

7.1 Timeline & Key Milestones

Timeline	Phase	Key Activities & Strategic Milestones
January 2026	Mobilization & Partnerships	Issue "Call for Hosts" to 38 provincial rectors; secure anchor industry partners (≥5 commitments); finalize MURI documentation; recruit provincial coordination teams
February 2026	Curriculum Development & Testing	Beta test T6 toolkits; finalize Nusantara AI Protocol; train 300–400 bootcamp facilitators; conduct dry-run IRIS cycles
March 2026	Institutional Confirmation	Confirm host institutions in all 38 provinces; complete MURI pre-approval; finalize government partnerships; secure written commitments from Chancellors/Rectors
April–May 2026	Logistics & Media Preparation	Finalize bootcamp site logistics; launch recruitment campaigns; prepare press materials; secure government/Cabinet endorsement
June 2026	THE CLOUD: Ignition	AISEA Bridge Conference (Bali): Official launch; Nusantara AI Protocol establishment; CEO/government commitments; Digital Torch lighting; nationwide

Timeline	Phase	Key Activities & Strategic Milestones
		livestream; international media coverage
July–September 2026	THE GROUNDING: Deployment	Provincial bootcamps across all 38 provinces in 4-week cycles; 100,000 total participants; Day 1 in-person intensive + 3 weeks online T6 learning; MURI verification at each leg
October–December 2026	Consolidation & Aggregation	All 38 provinces complete bootcamps; data aggregation; Peta Potensi AI Nusantara dashboard development; credential verification; summit preparation
January 10–15, 2027	THE HORIZON: Legacy Synthesis	National AI Summit (Jakarta); Peta Potensi AI Nusantara presentation to President/Cabinet; MURI awards ceremony; Nusantara AI Fellowship announcement; international media coverage

8. BUDGET ALLOCATION

Total: IDR 6.6 billion (USD \$400,000) as a minimum baseline, excluding platform development

Budget Category	Allocation	Details
T6 Platform Operations & Hosting	IDR 1 billion	Cloud infrastructure, API costs, blockchain fees, platform maintenance during peak usage
Provincial Bootcamp Delivery	IDR 3.8 billion	Instructor honorariums, team logistic, 1-day venue rentals per province, participant materials, meals
AISEA Bridge Conference	IDR 250 million	Bali venue, catering, transportation, livestream production
Media, Documentation & MURI	IDR 500 million	Professional video documentation, MURI application/verification, press materials, media monitoring
National AI Summit	IDR 750 million	Jakarta venue, visualization infrastructure, presentation production, logistics
Contingency & Overhead	IDR 300 million	Operational contingency

9. PARTNERSHIP & GOVERNANCE STRUCTURE

The campaign operates through a Hexa-Helix collaboration framework bringing six stakeholder sectors into coordinated action:

Stakeholder Sector	Role & Responsibilities	Key Partners
Initiators (TSEA & UID)	Campaign strategy, T6 platform infrastructure, overall coordination, financial management	—
Academia Lead by: ITB	Co-host institutions (38 rectors), curriculum alignment, instructor training, credential verification	UI, Binus, UGM, Unair, USU, regional universities
Government Lead by: KORIKA (TBC)	Policy patronage, facility support, participant subsidies, institutional legitimacy	Kemenkomdigi, KemenUMKM, Kemenekraf, BRIN, Bappenas, Presidential Staff Office
Industry Partners Lead by: TELKOM (TBC)	Main sponsors, real-world problems/datasets, graduate hiring, mentorship, co-investment	Google, Microsoft, Amazon, Telkomsel, BI, OJK, BNI, Mandiri, Sinar Mas
Civil Society/NGOs	Equitable access assurance, quality monitoring, community engagement, independent evaluation	Rumah Perubahan, Digitalisasi untuk Semua, Inklusi Digital Indonesia
International Partners	Technology expertise, diplomatic support, research collaboration, international visibility	Google, Microsoft, Anthropic, World Bank, UNDP, ADB

10. RISK ASSESSMENT & MITIGATION

Risk Category	Risk Description	Mitigation Strategy
Enrollment Risk	Insufficient participants in lower-demand provinces	Pre-bootcamp recruitment; employer/government mandate; subsidized participation; community partnerships; influencer endorsement
Platform/Technology Risk	T6 technical failures, security vulnerabilities	Redundant cloud infrastructure; automated backups; security audits; 24/7 support; degradation pathway
Instructor Quality Risk	Inconsistent bootcamp quality across provinces	Standardized training program; Socratic AI tutor reduces dependency; mystery shopper monitoring; certification mechanism; peer review councils
Timeline Risk	1-day bootcamp insufficient for team cohesion	Extended online mentoring; peer mentor matching; industry mentor pairing; pre-bootcamp orientation
Funding Risk	Budget overruns due to inflation/logistics	Partner cost-sharing; phased rollout; lean operational model; monthly budget review
Political/Policy Risk	Change in government or policy reversal	Presidential Decree framing; private sector commitment; statutory authority; bipartisan support
Media/Reputational Risk	Campaign failure generates negative coverage	Realistic projections; quality assurance mechanisms;

Risk Category	Risk Description	Mitigation Strategy
		transparent reporting; independent evaluation

11. SUCCESS METRICS

Participation & Engagement

Metric	Target	Measurement Method
Total bootcamp participants	100,000+	T6 platform registration database
Provincial participation equity	≤15% variance between provinces	Disaggregated enrollment analysis
Completion rate	≥75%	Valid blockchain credentials (certificates) issued
Demographic diversity	≥45% women; ≥30% underrepresented regions	Enrollment survey
Media coverage reach	≥100 million impressions	Media monitoring service

Learning Outcomes

Metric	Target	Measurement Method
IRIS project completion quality	≥70% achieve functional prototype validation	Instructor evaluation rubric
AI competency achievement	≥70% demonstrate Level 3 capability	T6 diagnostic assessments
Knowledge retention (6-month)	≥60% retain capability	Alumni survey + capstone assignment
Peer-to-peer learning	≥40% of learning from peer collaboration	T6 platform learning analytics

Economic Impact

Metric	Target	Measurement Method
Employment rate	≥60% employed in AI-related roles within 12 months	Alumni employment tracking

Metric	Target	Measurement Method
Income/wage growth	≥15% average increase within 12 months	Alumni survey (6–12 month follow-up)
SME cost reduction	≥12% operational cost reduction for SME participants	Business outcomes survey
Startup creation	≥10 AI-focused startups founded by alumni	Entrepreneurship tracking; startup registry

12. STAKEHOLDER VALUE PROPOSITION

For TSEA & UID:

- Establish thought leadership in applied AI education and platform infrastructure
- Create sustainable revenue stream through T6 platform business models
- Build 100,000-person alumni community for future engagement and research collaboration
- Attract more grants/endowment funds and international development institution attention

For Academic Institutions:

- Access to 100,000+ bootcamp participants as future students
- Industry-aligned curriculum innovation
- Real-world datasets and research opportunities for faculty
- Demonstrated contribution to national strategic priorities

For Government:

- Build 100,000+ AI-capable practitioners for civil service digital transformation
- Access to Peta Potensi AI Nusantara for evidence-based infrastructure and industrial policy
- Demonstrated technological modernity and innovation leadership
- Measurable development impact across all 38 provinces

For Industry Partners:

- Secure early access to 100,000+ AI-capable workforce
- Strategic intelligence on talent clusters, sectoral trends, and regional innovation patterns
- Brand positioning as innovation leader and national strategic partner
- Reduce recruiting, training, and onboarding costs through shared bootcamp delivery

For Society:

- Ensure rural, underrepresented, and economically disadvantaged populations gain AI capability
 - Enable 100,000 individuals to move from analog to digital economy
 - Strengthen economic self-determination through indigenous AI talent
 - Position Indonesia as model for inclusive AI development in ASEAN and global context
-

13. CONCLUSION

Ekspedisi AI Nusantara 2026 represents a strategic intervention in the wake of Artificial General Intelligence, as a foundation to achieve Indonesia Emas 2045. By synchronizing high-level policy alignment with grassroots operational execution, and by leveraging next-generation educational technology engineered for resilience and equity, Indonesia activates its demographic dividend and shifts from being a consumer of foreign AI solutions to a producer of indigenous AI applications and ecosystems.

The central strategic thesis is simple but profound: we must "Ground the Cloud"—taking the borderless, abstract potential of cloud-based AI and making it concrete, contextualized, and locally applicable across Indonesia's diverse economy.

Operational Advantages:

- Efficiency: 38 provinces × 4 weeks = complete deployment by December 2026
- Cost Effectiveness: 1-day in-person intensive reduces logistics by ~IDR 8.5B
- Quality Assurance: October–December 2026 provides 3-month consolidation for data aggregation and summit preparation
- Participant Accessibility: Asynchronous 4-week online learning accommodates work schedules
- Institutional Legacy: Nusantara AI Fellowship establishes permanent competency pipeline

The path forward is clear. Let us ground the cloud.

APPENDICES

Appendix A: Nusantara AI Protocol Framework (Summary)

Curriculum Competency Standards:

- Foundational Tier: AI literacy and real-world applications
- Intermediate Tier: AI tool proficiency (ChatGPT, Copilot, AutoML, visualization)
- Advanced Tier: IRIS capability (conceiving, realizing, Iterating, scaling AI solutions)
- Mastery Tier: Research and innovation in AI advancement

Ethical Framework:

- Privacy and data protection aligned with Indonesian law
- Pancasila principles applied to AI governance
- Indigenous knowledge protection
- Environmental responsibility in AI computation
- Fair labor considerations in AI adoption

Credential Standards:

- Blockchain-based verification mechanisms
 - Cross-sector employer recognition
 - International equivalency mappings
 - Continuous competency assessment
-

Appendix B: T6 Platform Technical Specifications (Summary)

System Architecture:

- Frontend: React.js (responsive across devices, low-bandwidth optimized)
- Backend: Python (FastAPI), Node.js (microservices)
- Database: PostgreSQL, Redis caching
- Cloud Infrastructure: Biznet Gio, Indonesia Cloud or other local providers
- Containerization: Docker, Kubernetes orchestration
- Blockchain: Ethereum smart contracts or organization-controlled blockchain

Security & Compliance:

- ISO 27001 information security certification
- GDPR/PDPA data privacy compliance
- Third-party penetration testing (quarterly)
- Enterprise-grade DDoS protection
- TLS 1.3 encryption for all communications

Scalability Targets:

- Concurrent Users: 100,000+ simultaneous access
- Data Throughput: 1 TB+ monthly project data
- API Uptime: 99.95% availability (4 hours downtime per year maximum)
- Geographic Redundancy: Southeast Asian data centers for minimal latency
- Auto-Scaling: Automatic infrastructure scaling with peak load

Appendix C: Provincial Bootcamp Schedule (4-Week Model)

Month	Provinces	Participants	Completion
July 2026	Sumatra (6) + Kalimantan (6) = 12 provinces	30,000	All cohorts complete IRIS by August 1
August 2026	Java (6) + Sulawesi (9) = 15 provinces	37,500	All cohorts complete IRIS by September 1
September 2026	Nusa Tenggara (5) + Papua (6) = 11 provinces	32,500	All cohorts complete IRIS by October 1
October–December 2026	Consolidation, Validation & Aggregation	All cohorts	Peta Potensi AI Nusantara development
January 10–15, 2027	NATIONAL AI SUMMIT (Jakarta)	All 100,000	Peta Potensi AI Nusantara launch + legacy announcement

REFERENCES

- [1] McKinsey & Company. (2024). Southeast Asia AI Opportunity: Market Size Projections and Talent Gap Analysis. McKinsey Center for Future of Work, Asia-Pacific Division.
- [2] Asian Development Bank (ADB). (2024). ASEAN AI Competitiveness Index: Regional Benchmarking and Strategic Analysis. ADB Technology and Innovation Division.
- [3] United Nations Population Fund (UNFPA). (2024). Indonesia Population Pyramid and Demographic Dividend Analysis 2024-2030.
- [4] World Bank. (2024). Indonesia Economic Outlook: Digital Transformation and AI Integration. World Bank East Asia and Pacific Region Publications.
- [5] Indonesian Ministry of Agriculture. (2023). National Agricultural Land Use and Productivity Statistics 2023. Jakarta: Ministry of Agriculture Publications.
- [6] Graesser, A. C., Person, N. K., & Magliano, J. P. (1995). Collaborative Dialogue Patterns in Naturalistic One-to-One Tutoring. *Applied Cognitive Psychology*, 9(6), 495-522.
- [7] World Bank. (2024). Indonesia AI Market Analysis: Growth Drivers and Investment Landscape. World Bank Southeast Asia Digital Economy Report.

Document Information

Prepared By:

Putra Nasution, Director of Marketing & Admission Tsinghua SEA (TSEA)

In Collaboration With:

United in Diversity (UID) and TSEA Faculty

Date: December 16, 2025 | **Status:** Strategic Proposal—Final Edition

Classification: INTERNAL CIRCULATION